

Redi-Drive Anchors



SPECIFIED FOR ANCHORAGE INTO CONCRETE, BLOCK AND BRICK

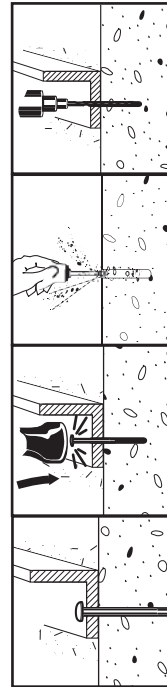
The Redi-Drive is a high performance small diameter one-piece hammer-drive anchor. The anchor holds based on a friction principle—the shank diameter is larger than the drill hole size. Anchors shall be installed with carbide-tipped hammer drill bits made in accordance to ANSI B212.15-1994.

The Redi-Drive is available in four types... mushroom head, pipe-hanging (1/4" & 3/8") FM approved (on 3/8"), Tie-Wire, and double-head forming versions. Anchor performance in solid concrete at one inch embedment shall exceed 400 lbs. allowable tension load and 750 lbs. allowable shear load.

APPROVALS/LISTINGS

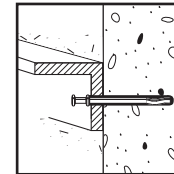
Meets or exceeds U.S. Government G.S.A. Specification FF-S-325 Group VI
Factory Mutual (3/8" pipe-drive)

INSTALLATION STEPS FOR REDI-DRIVE & FORMING ANCHORS



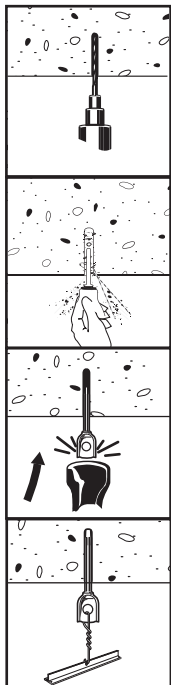
1. Drill a proper-sized diameter hole at a minimum depth (see chart on page 50, ANSI B212.15-1994).
2. Clean hole.
Please note hole is 3/16" but diameter of Redi-Drive is 1/4" (except for PD8-134 and FD8-234)
3. Insert anchor through material to be fastened (insert tie-wire or pipe version Redi-Drive anchors into drilled holes) and drive anchor with a 3-lb. hammer until the head is flush with surface or desired embedment.

Anchor is now set for Redi-Drive Anchor.



Anchor is now set for Forming Anchor.

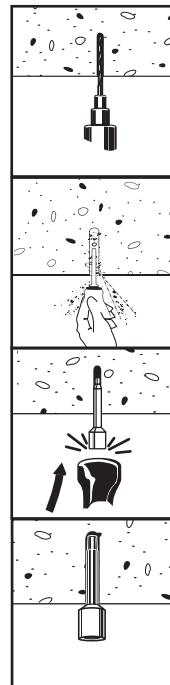
INSTALLATION STEPS FOR REDI-DRIVE TIE-WIRE ANCHORS



1. Drill a proper-sized diameter hole at a minimum depth (see chart on page 50, ANSI B212.15-1994).
2. Clean hole.
Please note hole is 3/16" but diameter of Redi-Drive is 1/4" (except for PD8-134 and FD8-234)
3. Insert anchor through material to be fastened (insert tie-wire or pipe version Redi-Drive anchors into drilled holes) and drive anchor with a 3-lb. hammer until the head is flush with surface or desired embedment.

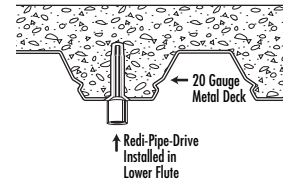
Anchor is now set.

INSTALLATION STEPS FOR REDI-DRIVE PIPE-DRIVE ANCHORS



1. Drill a proper-sized diameter hole at a minimum depth (see chart on page 50, ANSI B212.15-1994).
2. Clean hole.
3. Insert anchor through material to be fastened (insert tie-wire or pipe version Redi-Drive anchors into drilled holes) and drive anchor with a 3-lb. hammer until the head is flush with surface or desired embedment.

Anchor is now set.



Redi-Drive Anchors Anchoring Overhead in 3000 PSI Lightweight Concrete On Metal Deck

ANCHOR	DRILL HOLE DIAMETER In. (mm)	EMBEDMENT In. (mm)	3000PSI (20.7 MPa) CONCRETE			
			ULTIMATE TENSION LOAD Lbs. (kN)		ALLOWABLE WORKING LOAD Lbs. (kN)	
3/8" Pipe Drive	1/4 (6.4)	1-1/2 (38.1)	Upper Flute	1,099 (4.9)	275 (1.2)	(1.2)
			Lower Flute	994 (4.4)	249 (1.1)	(1.1)

Safe working loads for single installations under static loading conditions should not exceed 25% of the ultimate capacity.

Redi-Drive Anchors Ultimate Tension and Shear Values (Lbs/kN) in Concrete, Hollow Block and Grout Filled

SHANK DIA. ANCHOR	EMBEDMENT In. (mm)	4500 PSI (31.0 MPa)		CMU (HOLLOW BLOCK) PSI (MPa)		CMU (GROUT FILLED) PSI (MPa)	
		TENSION Lbs. (kN)	SHEAR Lbs. (kN)	TENSION Lbs. (kN)	SHEAR Lbs. (kN)	TENSION Lbs. (kN)	SHEAR Lbs. (kN)
Redi-Drive	3/4 (19.1)	1,215 (5.4)	1,857 (8.3)	382 (1.7)	683 (3.0)	731 (3.3)	1,614 (7.2)
	1 (25.4)	1,667 (7.4)	3,112 (13.8)	392 (1.7)	987 (4.4)	870 (3.9)	1,766 (7.9)
	1-1/4 (31.8)	2,373 (10.6)	3,355 (14.9)	398 (1.8)	1,381 (6.1)	1,543 (6.9)	2,778 (12.4)
Tie-Drive or 1/4" Pipe-Drive	1-1/4 (31.8)	2,372 (10.6)	-- --	-- --	-- --	-- --	-- --
3/8" Pipe-Drive	1-1/2 (38.1)	2,090 (9.3)	-- --	-- --	-- --	-- --	-- --

Safe working loads for single installations under static loading conditions should not exceed 25% of the ultimate capacity.

The tabulated values are for anchors installed in a minimum of 12 diameters on center and a minimum edge distance of 10 diameters for 100 percent anchor efficiency. Space and edge distance may be reduced to six diameters spacing and five diameter edge distance provided values are reduced 50%. Linear interpolation may be used for intermediate spacing and edge margins.

SELECTION CHART

Redi-Drive Anchors

Typical Applications—
Electrical boxes, conduit clips, and duct work



PART NUMBER	HEAD DIA. In. (mm)	DRILL BIT SIZE In. (mm)	TOTAL LENGTH In. (mm)	MIN. EMBEDMENT In. (mm)	MAX. FIXTURE THICKNESS In. (mm)	CLEARANCE HOLE SIZE In. (mm)	QTY/WT PER BX lbs.	QTY/WT PER MASTER CARTON lbs.
RD4-034	7/16 (11.1)	3/16 (4.8)	3/4 (19.1)	11/16 (17.5)	1/16 (1.6)	1/4 (6.4)	100/ 1.4	1000/15
RD4-118	7/16 (11.1)	3/16 (4.8)	1-1/8 (28.6)	3/4 (19.1)	3/8 (9.5)	1/4 (6.4)	100/ 1.6	1000/17
RD4-158	7/16 (11.1)	3/16 (4.8)	1-5/8 (41.3)	3/4 (19.1)	7/8 (22.2)	1/4 (6.4)	100/ 2.2	1000/23
RD4-200	7/16 (11.1)	3/16 (4.8)	2 (50.8)	3/4 (19.1)	1-1/4 (31.8)	1/4 (6.4)	100/ 2.6	1000/26
RD4-212	7/16 (11.1)	3/16 (4.8)	2-1/2 (63.5)	3/4 (19.1)	1-3/4 (44.5)	1/4 (6.4)	100/ 3.2	1000/33
RD4-300	7/16 (11.1)	3/16 (4.8)	3 (76.2)	3/4 (19.1)	2-1/4 (57.2)	1/4 (6.4)	100/ 3.7	1000/37

Tie Wire Typical Applications—
Acoustical ceilings, suspended electrical fixture, pencil rod



PART NUMBER	HEAD SIZE O.D. In. (mm)	DRILL BIT SIZE In. (mm)	TOTAL LENGTH In. (mm)	MIN. EMBEDMENT In. (mm)	HEAD HEIGHT In. (mm)	HEAD SIZE I.D.	QTY/WT PER BX lbs.	QTY/WT PER MASTER CARTON lbs.
TD4-112	3/16 (4.8)	3/16 (4.8)	2-1/8 (54.0)	1-1/4 (31.8)	5/8 (15.9)	9/32" hole	100/ 3.5	1000/35

Pipe Hanging Typical Applications—
Fire sprinkler, water lines, steam/gas, cable tray, electrical conduits



PART NUMBER	INTERNAL THREAD SIZE I.D.	DRILL BIT SIZE In. (mm)	TOTAL LENGTH In. (mm)	MIN. EMBEDMENT In. (mm)	HEAD HEIGHT In. (mm)	INTERNAL THREADED DIAMETER O.D. In. (mm)	QTY/WT PER BX lbs.	QTY/WT PER MASTER CARTON lbs.
PD4-112	1/4 - 20"	3/16 (4.8)	2-1/8 (54.0)	1-1/4 (31.8)	5/8 (15.9)	13/32 (10.3)	100/ 3.0	1000/30
PD8-134	3/8 - 16"	1/4 (6.4)	2-1/2 (63.5)	1-3/4 (44.5)	3/4 (19.1)	9/16 (14.3)	100/ 6.0	1000/61

Forming
Wood attachments to concrete are common Redi-Drive applications, whether permanent or temporary



PART NUMBER	HEAD SIZE O.D. In. (mm)	DRILL BIT SIZE In. (mm)	TOTAL LENGTH In. (mm)	MIN. EMBEDMENT In. (mm)	HEAD HEIGHT In. (mm)	HEAD SIZE I.D.	QTY/WT PER BX lbs.	QTY/WT PER MASTER CARTON lbs.
FD6-234	7/16 (11.1)	3/16 (4.8)	2-3/4 (69.9)	1-1/4 (31.8)	N/A	N/A	100/ 3.1	1000/31
FD8-234	7/16 (11.1)	1/4 (6.4)	2-3/4 (69.9)	1-1/4 (31.8)	N/A	N/A	100/ 5.6	1000/56