

C6 Adhesive

**2006 IBC
Compliant**

Reliable Performance— Even Under the Most Severe Installation Conditions

The hardener and resin are completely mixed as they are dispensed from the dual cartridge through a static mixing nozzle. The pre-mixed adhesive is injected directly into the anchor hole. C6 can be used with threaded rod or rebar (for fastening to hollow base materials, see pages 30 and 33).



NEW!

Base Material Temperature 15°F
(cartridge temperature must be ≥ 70°F)



ADVANTAGES

- 1 hour cure time (see below)
- Works in damp holes and underwater applications
- Minimum shrinkage—can be used in oversized holes and diamond cored holes
- High heat deflection temperature: 140°F (ASTM D648)
- One formula for both solid and hollow base materials
- NSF standard 61 certified for drinking water systems
- Extensively tested—earthquake, underwater, creep, freeze-thaw, radiation, fire, fatigue, electrical isolation, ozone and many more test programs have been conducted on C6
- Extensive use—C6 has been used on projects all over the world for almost 20 years

Curing Times

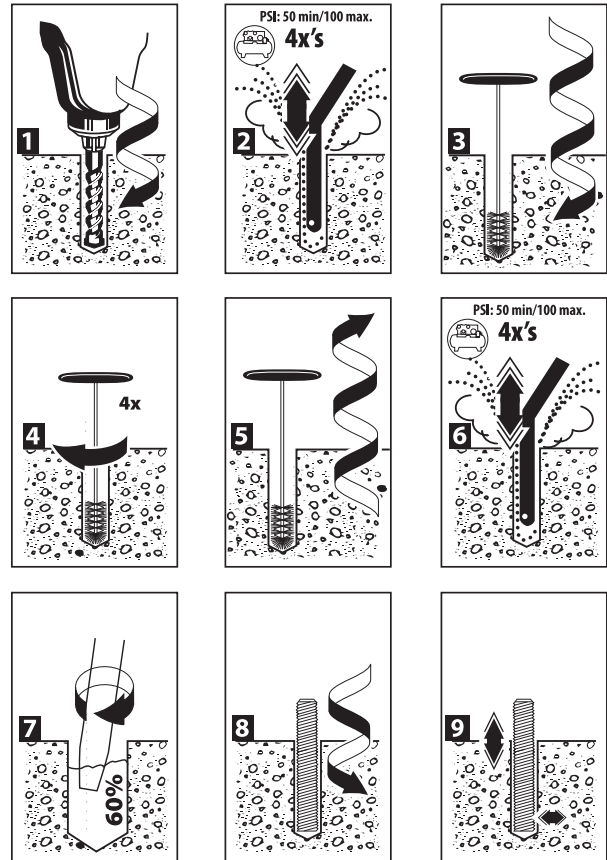
BASE MATERIAL ¹ (F°/C°)	WORKING TIME ²	FULL CURE TIME
120°/ 49°	4 minutes	1 hour
110°/ 43°	4 minutes	1 hour
90°/ 32°	5 minutes	1 hour
80°/ 26°	6 minutes	1 hour
70°/ 21°	7 minutes	1 hour
60°/ 16°	7 minutes	2 hours
50°/ 10°	7 minutes	2 hours
40°/ 4°	7 minutes	24 hours
15°/ -9°	6 minutes	24 hours

¹ Cartridge must be ≥ 70° F.

² Working time is max time from the end of mixing to when the insertion of the anchor into the adhesive shall be completed.

Gel Time per ASTM D2471 = 10 minutes at 72° F

INSTALLATION STEPS



Certified to
ANSI/NSF 61

APPROVALS/LISTINGS

ICC Evaluation Service, Inc. – #ER4285

City of Los Angeles – RR#24975




City of Los Angeles – RR#24927



NSF Standard 61 Certified for Drinking Water Components

Meets ASTM C881-02; Type IV; Grade 3; Class A, B, and C; with the exception of gel time and tensile strength

DOT Approvals

C6-18 fl. oz. Ordering Information

PART NUMBER	DESCRIPTION	CTN QTY
 C6-18	C6 Adhesive, 18 Fl. Oz. Cartridge	6
 E24XL	Mixing Nozzle for C6-18 Cartridge Nozzle diameter fits 9/16" holes (overall length of nozzle 10-3/8")	24
 E102	Hand Dispenser for C6-18 Cartridges Dispenses both 18 oz. and 22 oz. Cartridges	1

PART NUMBER	DESCRIPTION	CTN QTY
 RH7030	EPCON DRIVE Cordless, battery powered dispensing tool for the C6-18 Cartridge	1
 E200	Pneumatic Dispenser for C6-18 Cartridge	1

Plunger Repair Kit
 Available for E102 Dispenser
Part No. E102RKIT



ESTIMATING TABLE

C6 Number of Anchoring Installations Per Cartridge* 18 Fluid Ounce Cartridge Using Reinforcing Bar with C6 Adhesive in Solid Concrete

REBAR	DRILL HOLE DIA. INCHES	EMBEDMENT DEPTH IN INCHES (mm)														
		1 (25.4)	2 (50.8)	3 (76.2)	4 (101.6)	5 (127.0)	6 (152.4)	7 (177.8)	8 (203.2)	9 (228.6)	10 (254.0)	11 (279.4)	12 (304.8)	13 (330.2)	14 (355.6)	15 (381.0)
# 3	1/2	316.7	158.4	105.6	79.2	63.3	52.8	45.2	39.6	35.2	31.7	28.8	26.4	24.4	22.6	21.1
# 4	5/8	239.3	119.6	79.8	59.8	47.9	39.9	34.2	29.9	26.6	23.9	21.8	19.9	18.4	17.1	16.0
# 5	3/4	183.5	91.8	61.2	45.9	36.7	30.6	26.2	22.9	20.4	18.4	16.7	15.3	14.1	13.1	12.2
# 6	7/8	148.2	74.1	49.4	37.0	29.6	24.7	21.2	18.5	16.5	14.8	13.5	12.3	11.4	10.6	9.9
# 7	1-1/8	71.0	35.5	23.7	17.7	14.2	11.8	10.1	8.9	7.9	7.1	6.5	5.9	5.5	5.1	4.7
# 8	1-1/4	63.2	31.6	21.1	15.8	12.6	10.5	9.0	7.9	7.0	6.3	5.7	5.3	4.9	4.5	4.2
# 9	1-3/8	65.9	33.0	22.0	16.5	13.2	11.0	9.4	8.2	7.3	6.6	6.0	5.5	5.1	4.7	4.4
# 10	1-1/2	53.9	27.0	18.0	13.5	10.8	9.0	7.7	6.7	6.0	5.4	4.9	4.5	4.1	3.9	3.6
# 11	1-3/4	33.0	16.5	11.0	8.2	6.6	5.5	4.7	4.1	3.7	3.3	3.0	2.7	2.5	2.4	2.2

ESTIMATING TABLE

CLAMPING FORCE PROVIDED ON PAGE 20

C6 Number of Anchoring Installations Per Cartridge* 18 Fluid Ounce Cartridge Using Threaded Rod with C6 Adhesive in Solid Concrete

ROD In. (mm)	DRILL HOLE DIA. INCHES	EMBEDMENT DEPTH IN INCHES (mm)														
		1 (25.4)	2 (50.8)	3 (76.2)	4 (101.6)	5 (127.0)	6 (152.4)	7 (177.8)	8 (203.2)	9 (228.6)	10 (254.0)	11 (279.4)	12 (304.8)	13 (330.2)	14 (355.6)	15 (381.0)
1/4 (6.4)	5/16	587.3	293.7	195.8	146.8	117.5	97.9	83.9	73.4	65.3	58.7	53.4	48.9	45.2	42.0	39.2
3/8 (9.5)	7/16	340.0	170.0	113.3	85.0	68.0	56.7	48.6	42.5	37.8	34.0	30.9	28.3	26.2	24.3	22.7
1/2 (12.7)	9/16	244.7	122.4	81.6	61.2	48.9	40.8	35.0	30.6	27.2	24.5	22.2	20.4	18.8	17.5	16.3
5/8 (15.9)	3/4	125.2	62.6	41.7	31.3	25.0	20.9	17.9	15.7	13.9	12.5	11.4	10.4	9.6	8.9	8.3
3/4 (19.1)	7/8	99.1	49.5	33.0	24.8	19.8	16.5	14.2	12.4	11.0	9.9	9.0	8.3	7.6	7.1	6.6
7/8 (22.2)	1	82.0	41.0	27.4	20.5	16.4	13.7	11.7	10.3	9.1	8.2	7.5	6.8	6.3	5.9	5.5
1 (25.4)	1-1/8	67.6	33.8	22.5	16.9	13.5	11.3	9.7	8.4	7.5	6.8	6.1	5.6	5.2	4.8	4.5
1-1/4 (31.8)	1-3/8	51.2	25.6	17.0	12.8	10.2	8.5	7.3	6.4	5.7	5.1	4.6	4.3	3.9	3.7	3.4

* The number of anchoring installations is based upon calculations of hole volumes using ANSI tolerance carbide tipped drill bits, the nominal areas of the reinforcing bars and the stress areas of the threaded rods. These estimates do not account for waste.
 * Oversized holes acceptable but volume of adhesive will increase.

PACKAGING

1. Disposable, self-contained cartridge system capable of dispensing both epoxy components in the proper mixing ratio
2. Epoxy components dispensed through a static mixing nozzle that thoroughly mixes the material, and places the epoxy at the base of the pre-drilled hole
3. Cartridge markings: Include manufacturer's name, batch number and best-used-by date, mix ratio by volume, ANSI hazard classification, and appropriate ANSI handling precautions

PERFORMANCE TABLE

C6 Average Ultimate Tension and Shear Loads^{1,2,3} for Epoxy Adhesive Threaded Rod Installed in Grout Filled Concrete Block

THREADED ROD DIA. In. (mm)	DRILL HOLE DIAMETER In. (mm)	EMBEDMENT DEPTH In. (mm)	ANCHOR LOCATION	ULTIMATE TENSION Lbs. (kN)	ULTIMATE SHEAR Lbs. (kN)
3/8 (9.5)	7/16 (11.1)	3 (76.2)	GROUTED CELL	4,862 (21.6)	-- --
1/2 (12.7)	5/8 (15.9)	3 (76.2)	GROUTED CELL	4,953 (22.0)	-- --
1/2 (12.7)	5/8 (15.9)	6 (152.4)	GROUTED CELL	8,214 (36.5)	-- --
5/8 (15.9)	3/4 (19.1)	5 (127.0)	GROUTED CELL	7,355 (32.7)	-- --
3/4 (19.1)	7/8 (22.2)	6 (152.4)	Note 1	17,404 (77.4)	19,588 (87.1)
3/4 (19.1)	7/8 (22.2)	6 (152.4)	Note 2	17,404 (77.4)	8,668 (38.6)

1 Anchor can be located in grouted cell, "T" joint, or bed joint.

2 Anchor can be located in first grouted cell from edge.

3 Allowable working loads for the single installations under static loading should not exceed 25% (an industry standard) capacity or the allowable load of the anchor rod. Loads based upon testing with ASTM A193, Grade B7 rods.

PERFORMANCE TABLE

 DRILL HOLE DIAMETERS
 PROVIDED ON PAGE 18

C6
Epoxy Adhesive
Average Ultimate Tension and Shear Loads^{1,2,3}
for Threaded Rod Installed in Solid Concrete

THREADED ROD DIA. In. (mm)	MAX. CLAMPING FORCE AFTER PROPER CURE Ft.-Lbs. (Nm)	EMBEDMENT IN CONCRETE In. (mm)	2000 PSI (13.8 MPa) CONCRETE		4000 PSI (27.6 MPa) CONCRETE		6000 PSI (41.4 MPa) CONCRETE	
			ULTIMATE TENSION Lbs. (kN)	ULTIMATE SHEAR Lbs. (kN)	ULTIMATE TENSION Lbs. (kN)	ULTIMATE SHEAR Lbs. (kN)	ULTIMATE TENSION Lbs. (kN)	ULTIMATE SHEAR Lbs. (kN)
3/8 (9.5)	13 - 18 (17.6-24.4)	3-3/8 (85.7)	7,195 (32.0)	5,209 (23.2)	8,445 (37.6)	5,869 (26.1)	10,621 (47.2)	5,941 (26.4)
		4-1/2 (114.3)	8,317 (37.0)	5,209 (23.2)	10,021 (44.6)	5,869 (26.1)	10,603 (47.2)	5,941 (26.4)
1/2 (12.7)	22 - 25 (29.8-33.9)	4-1/2 (114.3)	13,271 (59.0)	11,427 (50.8)	17,684 (78.7)	12,585 (56.0)	17,684 (78.7)	12,585 (56.0)
		6 (152.4)	19,127 (85.1)	11,427 (50.8)	19,608 (87.2)	12,585 (56.0)	19,608 (87.2)	12,585 (56.0)
5/8 (15.9)	55 - 80 (74.6-108.5)	5-5/8 (142.9)	17,704 (78.8)	18,294 (81.4)	24,526 (109.1)	19,802 (88.1)	24,526 (109.1)	19,802 (88.1)
		7-1/2 (190.5)	22,642 (100.7)	18,294 (81.4)	28,766 (128.0)	19,802 (88.1)	29,456 (131.0)	19,802 (88.1)
3/4 (19.1)	106-160 (143.7-216.9)	6-3/4 (171.5)	28,779 (128.0)	25,723 (114.4)	31,521 (140.2)	25,723 (114.4)	33,759 (150.2)	25,723 (114.4)
		9 (228.6)	31,758 (141.3)	25,723 (114.4)	41,384 (184.0)	25,723 (114.4)	41,384 (184.0)	25,723 (114.4)
7/8 (22.2)	185-250 (250.8-338.9)	7-7/8 (200.0)	35,257 (156.8)	-- --	37,714 (167.8)	30,295 (134.8)	41,023 (182.5)	32,573 (144.9)
		10-1/2 (266.7)	-- --	-- --	51,211 (227.8)	30,295 (134.8)	51,211 (227.8)	32,573 (144.9)
1 (25.4)	276-330 (374.2-447.4)	9 (228.6)	40,334 (179.4)	38,519 (171.3)	47,886 (213.0)	40,341 (179.5)	47,886 (213.0)	46,416 (206.5)
		12 (304.8)	48,719 (216.7)	38,519 (171.3)	62,194 (276.7)	40,341 (179.5)	63,053 (280.5)	46,416 (206.5)
1-1/4 (31.8)	370-660 (501.6-894.8)	11-1/4 (285.8)	55,654 (247.6)	65,085 (289.5)	56,981 (253.5)	65,085 (289.5)	-- --	65,085 (289.5)
		15 (381.0)	65,728 (289.5)	65,085 (289.5)	79,726 (354.7)	65,085 (289.5)	-- --	65,085 (289.5)

1 Allowable working loads for the single installations under static loading should not exceed 25% capacity or the allowable load of the anchor rod.

2 Ultimate load values in 2000, 4000, and 6000 psi stone aggregate concrete. Ultimate loads are indicated for the embedment shown in the Embedment in Concrete column. Performance values are based on the use of high strength threaded rod (ASTM A193 Gr. B7). The use of lower strength rods will result in lower ultimate tension and shear loads.

3 Linear interpolation may be used for intermediate spacing and edge distances (see page 22).

C6 Adhesive Edge/Spacing Distance Load Factor Summary
for Installation of Threaded Rod and Reinforcing Bar^{1,2}
LOAD FACTOR
Critical Edge Distance—Tension

100% Tension Load

Minimum Edge Distance—Tension

70% Tension Load

Critical Edge Distance—Shear

100% Shear Load

Minimum Edge Distance—Shear

30% Shear Load

DISTANCE FROM EDGE OF CONCRETE

1.25 x Anchor Embedment (or greater)

0.50 x Anchor Embedment

1.25 x Anchor Embedment (or greater)

0.30 x Anchor Embedment

LOAD FACTOR
Critical Spacing—Tension

100% Tension Load

Minimum Spacing—Tension

75% Tension Load

Critical Spacing—Shear

100% Shear Load

Minimum Spacing—Shear

30% Shear Load

DISTANCE FROM ANOTHER ANCHOR

1.50 x Anchor Embedment (or greater)

0.75 x Anchor Embedment

1.50 x Anchor Embedment (or greater)

0.50 x Anchor Embedment

1 Use linear interpolation for load factors at edge distances or spacing distances between critical and minimum.

2 Anchors are affected by multiple combination of spacing and/or edge distance loading and direction of the loading. Use the product of tension and shear loading factors in design.

PERFORMANCE TABLE

 DRILL HOLE DIAMETERS
 PROVIDED ON PAGE 18

C6
Epoxy Adhesive
Allowable Tension Loads^{1,2,3} for Threaded Rod Installed in Solid Concrete

THREADED ROD DIA. In. (mm)	EMBEDMENT DEPTH In. (mm)	ALLOWABLE TENSION LOAD BASED ON ADHESIVE BOND STRENGTH			ALLOWABLE TENSION LOAD BASED ON STEEL STRENGTH		
		2000 PSI (13.8 MPa) CONCRETE Lbs. (kN)	4000 PSI (27.6 MPa) CONCRETE Lbs. (kN)	6000 PSI (41.4 MPa) IN CONCRETE Lbs. (kN)	ASTM A307 (SAE 1018) Lbs. (kN)	ASTM A193 GR. B7 (SAE 4140) Lbs. (kN)	ASTM F593 AISI 304 SS Lbs. (kN)
3/8 (9.5)	3-3/8 (85.7)	1,800 (8.0)	2,110 (9.4)	2,655 (11.8)	2,080 (9.3)	4,340 (19.3)	3,995 (17.8)
	4-1/2 (114.3)	2,080 (9.2)	2,505 (11.1)	2,655 (11.8)	2,080 (9.3)	4,340 (19.3)	3,995 (17.8)
1/2 (12.7)	4-1/2 (114.3)	3,315 (14.8)	4,420 (19.7)	4,420 (19.7)	3,730 (16.6)	7,780 (34.6)	7,155 (31.8)
	6 (152.4)	4,780 (21.3)	4,900 (21.8)	4,900 (21.8)	3,730 (16.6)	7,780 (34.6)	7,155 (31.8)
5/8 (15.9)	5-5/8 (142.9)	4,425 (19.7)	6,130 (27.3)	6,130 (27.3)	5,870 (26.1)	12,230 (54.4)	11,250 (50.0)
	7-1/2 (190.5)	5,660 (25.2)	7,190 (32.0)	7,364 (32.8)	5,870 (26.1)	12,230 (54.4)	11,250 (50.0)
3/4 (19.1)	6-3/4 (171.5)	7,195 (32.0)	7,885 (35.1)	8,440 (37.5)	8,490 (37.8)	17,690 (78.7)	14,860 (66.1)
	9 (228.6)	7,940 (35.3)	10,345 (46.0)	10,345 (46.0)	8,490 (37.8)	17,690 (78.7)	14,860 (66.1)
7/8 (22.2)	7-7/8 (200.0)	8,810 (39.2)	9,430 (41.9)	10,260 (45.6)	11,600 (51.6)	25,510 (113.5)	20,835 (92.7)
	10-1/2 (266.7)	-- --	12,080 (57.0)	12,805 (57.0)	11,600 (51.6)	25,510 (113.5)	20,835 (92.7)
1 (25.4)	9 (228.6)	10,085 (44.9)	11,970 (53.3)	11,970 (53.0)	15,180 (67.5)	31,620 (140.7)	26,560 (118.1)
	12 (304.8)	12,180 (54.2)	15,545 (69.2)	15,760 (70.1)	15,180 (67.5)	31,620 (140.7)	26,560 (118.1)
1-1/4 (31.8)	11-1/4 (285.8)	13,915 (61.9)	14,245 (63.4)	14,245 (63.4)	23,800 (105.9)	49,580 (220.6)	34,670 (154.2)
	15 (381.0)	16,340 (72.7)	19,930 (88.7)	19,930 (88.7)	23,800 (105.9)	49,580 (220.6)	34,670 (154.2)

1 Use lower value of either bond or steel strength for allowable tensile load.

2 Allowable loads taken from ICC Evaluation Report #4285 (formerly ICBO).

3 Linear interpolation may be used for intermediate spacing and edge distances (see page 22).

PERFORMANCE TABLE
C6
Epoxy Adhesive
Average Ultimate Tension Loads^{1,2,3} for Threaded Rod Installed in Solid Concrete, Shallow Embedment

ANCHOR DIAMETER In. (mm)	DRILL HOLE DIAMETER In. (mm)	EMBEDMENT IN CONCRETE In. (mm)	3500 PSI (24.2 MPa) ULTIMATE TENSION Lbs. (kN)
1/4 (6.4)	5/16 (7.9)	1 (25.4)	1,653 (7.4)
		2-1/4 (57.2)	2,818 (12.5)
		3 (76.2)	3,599 (16.0)
3/8 (9.5)	7/16 (11.1)	1-1/2 (38.1)	3,426 (15.2)
1/2 (12.7)	9/16 (14.3)	2 (50.8)	6,100 (27.1)
5/8 (15.9)	3/4 (19.1)	2-1/2 (63.5)	8,775 (39.0)
3/4 (19.1)	7/8 (22.2)	3 (76.2)	12,625 (56.2)
7/8 (22.2)	1 (25.4)	3-1/2 (88.9)	18,650 (83.0)
1 (25.4)	1-1/8 (28.6)	4 (101.6)	25,034 (111.4)
1-1/4 (31.8)	1-3/8 (34.9)	5 (127.0)	37,100 (165.0)

1 Allowable working loads for the single installations under static loading should not exceed 25% capacity or the allowable load of the anchor rod.

2 Ultimate load values in 2000, 4000, and 6000 psi stone aggregate concrete. Ultimate loads are indicated for the embedment shown in the Embedment in Concrete column. Performance values are based on the use of high strength threaded rod (ASTM A193 Gr. B7). The use of lower strength rods will result in lower ultimate tension and shear loads.

3 Linear interpolation may be used for intermediate spacing and edge distances (see page 22).

PERFORMANCE TABLE

 DRILL HOLE DIAMETERS
 PROVIDED ON PAGE 18

C6
Epoxy Adhesive
Average Ultimate Tension Loads^{1,2,3} for Reinforcing Bar Installed in Solid Concrete

REINFORCING BAR In. (mm)	EMBEDMENT IN CONCRETE In. (mm)	2000 PSI (13.8 MPa) CONCRETE ULTIMATE TENSION Lbs. (kN)		4000 PSI (27.6 MPa) CONCRETE ULTIMATE TENSION Lbs. (kN)		ULTIMATE TENSILE AND YIELD STRENGTH GRADE 60 REBAR	
		MINIMUM YIELD STRENGTH Lbs. (kN)	MINIMUM ULTIMATE TENSILE STRENGTH Lbs. (kN)				
# 3 (9.5)	3-3/8 (85.7)	7,020 (31.2)	9,200 (40.9)	6,600 (29.4)	9,900 (44.0)		
	4-1/2 (114.3)	9,000 (40.1)	11,540 (51.3)	6,600 (29.4)	9,900 (44.0)		
# 4 (12.7)	4-1/2 (114.3)	11,940 (53.1)	15,140 (67.3)	12,000 (53.4)	18,000 (80.1)		
	6 (152.4)	16,703 (74.3)	18,880 (84.0)	12,000 (53.4)	18,000 (80.1)		
# 5 (15.9)	5-5/8 (142.9)	14,120 (62.8)	27,740 (123.4)	18,600 (82.7)	27,900 (124.1)		
	7-1/2 (190.5)	20,040 (89.1)	30,727 (136.7)	18,600 (82.7)	27,900 (124.1)		
# 6 (19.1)	6-3/4 (171.5)	17,940 (79.8)	29,200 (129.9)	26,400 (117.4)	39,600 (176.2)		
	9 (228.6)	25,520 (113.5)	41,640 (185.2)	26,400 (117.4)	39,600 (176.2)		
	10 (254.0)	--	45,000 (200.2)	26,400 (117.4)	39,600 (176.2)		
# 7 (22.2)	7-7/8 (200.0)	--	45,850 (204.0)	36,000 (160.1)	54,000 (240.2)		
	10-1/2 (266.7)	--	60,375 (268.6)	36,000 (160.1)	54,000 (240.2)		
	13 (330.2)	--	65,300 (290.5)	36,000 (160.1)	54,000 (240.2)		
# 8 (25.4)	9 (228.6)	30,960 (137.7)	54,180 (241.1)	47,400 (210.9)	71,100 (316.3)		
	12 (304.8)	30,960 (137.7)	65,420 (291.0)	47,400 (210.9)	71,100 (316.3)		
	16 (406.4)	--	86,700 (385.7)	47,400 (210.9)	71,100 (316.3)		
# 9 (28.6)	10-1/8 (257.2)	--	61,530 (273.7)	60,000 (266.9)	90,000 (400.4)		
	13-1/2 (342.9)	--	81,240 (361.4)	60,000 (266.9)	90,000 (400.4)		
	19 (482.6)	--	108,000 (480.4)	60,000 (266.9)	90,000 (400.4)		
# 10 (31.8)	11-1/4 (285.8)	44,600 (198.4)	76,500 (340.3)	76,200 (339.0)	114,300 (508.5)		
	15 (381.0)	49,220 (218.9)	82,320 (366.2)	76,200 (339.0)	114,300 (508.5)		
	19 (482.6)	--	120,000 (533.8)	76,200 (339.0)	114,300 (508.5)		

1 Allowable working loads for the single installations under static loading should not exceed 25% ultimate capacity or the allowable load of the anchor rod.

2 Ultimate load values in 2000 and 4000 psi stone aggregate concrete. Ultimate loads are indicated for the embedment shown in the Embedment in Concrete column. Performance values are based on minimum Grade 60 reinforcing bar. The use of lower strength rods will result in lower ultimate tension and shear loads.

3 SHEAR DATA: Provided the distance from the rebar to the edge of the concrete member exceeds 1.25 times the embedment depth of the rebar, calculate the ultimate shear load for the rebar anchorage as 60% of the ultimate tensile strength of the rebar.

PERFORMANCE TABLE

 DRILL HOLE DIAMETERS
 PROVIDED ON PAGE 18

C6
Epoxy Adhesive
Allowable Shear Loads^{1,2,3} for Threaded Rod Installed in Solid Concrete

THREADED ROD DIA. In. (mm)	MINIMUM EMBEDMENT DEPTH In. (mm)	ALLOWABLE SHEAR LOAD BASED ON CONCRETE STRENGTH			ALLOWABLE SHEAR LOAD BASED ON STEEL STRENGTH		
		2000 PSI (13.8 MPa) CONCRETE Lbs. (kN)	4000 PSI (27.6 MPa) CONCRETE Lbs. (kN)	6000 PSI (41.4 MPa) CONCRETE Lbs. (kN)	ASTM A307 (SAE 1018) Lbs. (kN)	ASTM A193 GR. B7 (SAE 4140) Lbs. (kN)	ASTM F593 AISI 304 SS Lbs. (kN)
3/8 (9.5)	3-3/8 (85.7)	1,300 (5.8)	1,465 (6.5)	1,500 (6.7)	1,040 (4.6)	2,170 (9.7)	1,995 (8.9)
1/2 (12.7)	4-1/2 (114.3)	2,855 (12.7)	3,145 (14.0)	3,145 (14.0)	1,870 (8.3)	3,895 (17.3)	3,585 (15.9)
5/8 (15.9)	5-5/8 (142.9)	4,575 (20.3)	4,950 (22.0)	4,950 (22.0)	2,940 (13.1)	6,125 (27.2)	5,635 (25.1)
3/4 (19.1)	6-3/4 (171.5)	6,430 (28.6)	6,430 (28.6)	6,430 (28.6)	4,250 (18.9)	8,855 (39.4)	7,440 (33.1)
7/8 (22.2)	7-7/8 (200.0)	--	7,575 (33.7)	8,140 (36.2)	5,800 (25.8)	12,760 (56.8)	10,730 (47.7)
1 (25.4)	9 (228.6)	9,630 (42.8)	10,085 (44.9)	11,600 (51.6)	7,590 (33.8)	15,810 (70.3)	13,285 (59.1)
1-1/4 (31.8)	11-1/4 (285.8)	16,270 (72.4)	16,270 (72.4)	16,270 (72.4)	11,900 (52.9)	24,790 (110.3)	18,840 (83.8)

1 Use lower value of either concrete or steel strength for allowable shear load.

2 Allowable loads taken from ICC Evaluation Report #4285 (formerly ICBO).

3 Linear interpolation may be used for intermediate spacing and edge distances (see page 22).

Combined Tension and Shear Loading—for Adhesive Anchors

Allowable loads for anchors under tension and shear loading at the same time (combined loading) will be lower than the allowable loads for anchors subjected to 100% tension or 100% shear. Use the following equation to evaluate anchors in combined loading conditions:

$$\left(\frac{N_a}{N_s}\right)^{5/3} + \left(\frac{V_a}{V_s}\right)^{5/3} \leq 1$$

 N_a = Applied Service Tension Load

 N_s = Allowable Tension Load

 V_a = Applied Service Shear Load

 V_s = Allowable Shear Load

C6 Chemical Resistance

C6 Chemical Resistance		HIGH Anchors installed with C6 epoxy could be submerged in these materials.	MEDIUM Intermittent exposure or temporary submersion due to splash or spill.	LOW Exposure of C6 should be limited to splash and spill exposure followed by immediate cleanup.
Xylene	✓			
Gasoline	✓			
20% Caustic (NaOH)	✓			
Fresh Water	✓			
Salt Water	✓			
10% Sulfuric Acid (H ₂ SO ₄)		✓		
3.5% Hydrochloric Acid (HCl)		✓		
9% Phosphoric Acid (H ₃ PO ₄)		✓		
Toluene		✓		
10% Nitric Acid		✓		
8.5% Ammonium Hydroxide		✓		
5% Bleach			✓	
Acetone			✓	
Glacial Acetic Acid			✓	
Methanol			✓	
Methylene Chloride			✓	

Important Note: This chemical resistance table above applies only when C6 epoxy is used for installing anchors into concrete in a conventional manner with recommended hole sizes. Installation of the anchor must always be done in a drilled hole which is completely cleaned of all concrete dust and is dry. Exposure to solvents, chemicals and water, as listed above, should occur only after the C6 epoxy has fully cured.