

# Hammer-Set™ Anchors

## Nail-Drive Anchors



### DESCRIPTION/SUGGESTED SPECIFICATIONS

#### Hammer-Set Nail Drive Anchors— SPECIFIED FOR ANCHORAGE INTO CONCRETE, BLOCK OR BRICK



Hammer-Set  
Nail-Drive  
Anchor

The Hammer-Set one-piece zinc plated steel anchor consists of an expansion body and expander drive pin. Anchors meet or exceed GSA specification A-A-1925A Type 1. (Formerly GSA: FF-S-325 Group V, Type 2, Class 3)

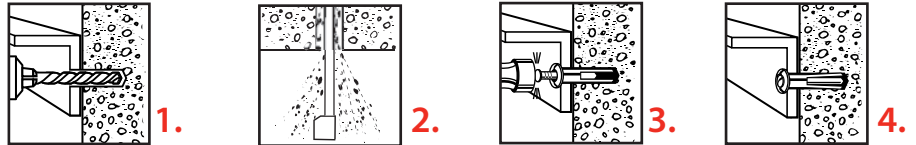
### ADVANTAGES

- Fast, easy installation
- Works in concrete, block and brick
- Install through material to be fastened
- Low profile mushroom head style

### APPROVALS/LISTINGS

Meets or exceeds GSA specification A-A-1925A Type 1 (Formerly GSA: FF-S-325 Group V, Type 2, Class 3)

### INSTALLATION STEPS

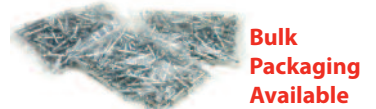


1. Drill proper size hole through material to be fastened into base material. (See Chart for bit size).
2. Clean hole.
3. Insert Hammer-Set into hole until head of anchor body is flush with material to be fastened. Tap the nail until flush with head of anchor. Ensure minimum embedment is 1/4" deeper than anchor embedment. Be sure head is firmly against fixture
4. Anchor is now set. **\*\* NOT RECOMMENDED FOR OVERHEAD \*\***

### SELECTION CHART

#### Hammer-Set

PART NUMBER	DESCRIPTION In. (mm)	DRILL SIZE In. (mm)	MAX. FIXTURE THICKNESS In. (mm)	MIN. EMBEDMENT In. (mm)	MIN. HOLE DEPTH In. (mm)	QTY/WT PER BOX lbs.	QTY/WT PER MASTER CTN. lbs.
HS-1607	3/16 x 7/8 (4.8 x 22.2)	3/16 (4.8)	1/4 (6.4)	5/8 (15.9)	1-1/8 (28.6)	100/ 2.0	1000/20
HS-1406	1/4 x 3/4 (6.4 x 19.1)	1/4 (6.4)	1/8 (3.2)	5/8 (15.9)	1 (25.4)	100/ 2.2	1000/22
HS-1410	1/4 x 1 (6.4 x 25.4)	1/4 (6.4)	1/4 (6.4)	3/4 (19.1)	1-1/4 (31.8)	100/ 2.4	1000/24
HS-1412	1/4 x 1-1/4 (6.4 x 31.8)	1/4 (6.4)	1/2 (12.7)	3/4 (19.1)	1-1/2 (38.1)	100/ 2.6	1000/26
HS-1414	1/4 x 1-1/2 (6.4 x 38.1)	1/4 (6.4)	3/4 (19.1)	3/4 (19.1)	1-3/4 (44.5)	100/ 2.8	1000/28
HS-1420	1/4 x 2 (6.4 x 50.8)	1/4 (6.4)	1-1/4 (31.8)	3/4 (19.1)	2-1/4 (57.2)	100/ 3.5	1000/35



### APPLICATIONS



\*For overhead applications refer to page 85 for Redi-Drive information and performance data

NOT FOR USE IN OVERHEAD APPLICATIONS\*

- Electrical boxes
- Conduit clips
- Drywall track
- Roof flashing

### PERFORMANCE TABLE

#### Hammer-Set Ultimate Tension and Shear Values in Concrete (Lbs/kN)\*

ANCHOR DIA. In. (mm)	EMBEDMENT In. (mm)	4000 PSI (27.6 MPa)	
		TENSION Lbs. (kN)	SHEAR Lbs. (kN)
3/16" (4.8)	5/8" (15.9)	640 (2.8)	810 (3.6)
1/4" (6.4)	3/4" (19.1)	880 (3.9)	970 (4.3)
1/4" (6.4)	1" (25.4)	950 (4.2)	970 (4.3)
1/4" (6.4)	1-1/4" (31.8)	1,025 (4.6)	970 (4.3)

Safe working loads for single installations under static loading conditions should not exceed 25% of the ultimate capacity.